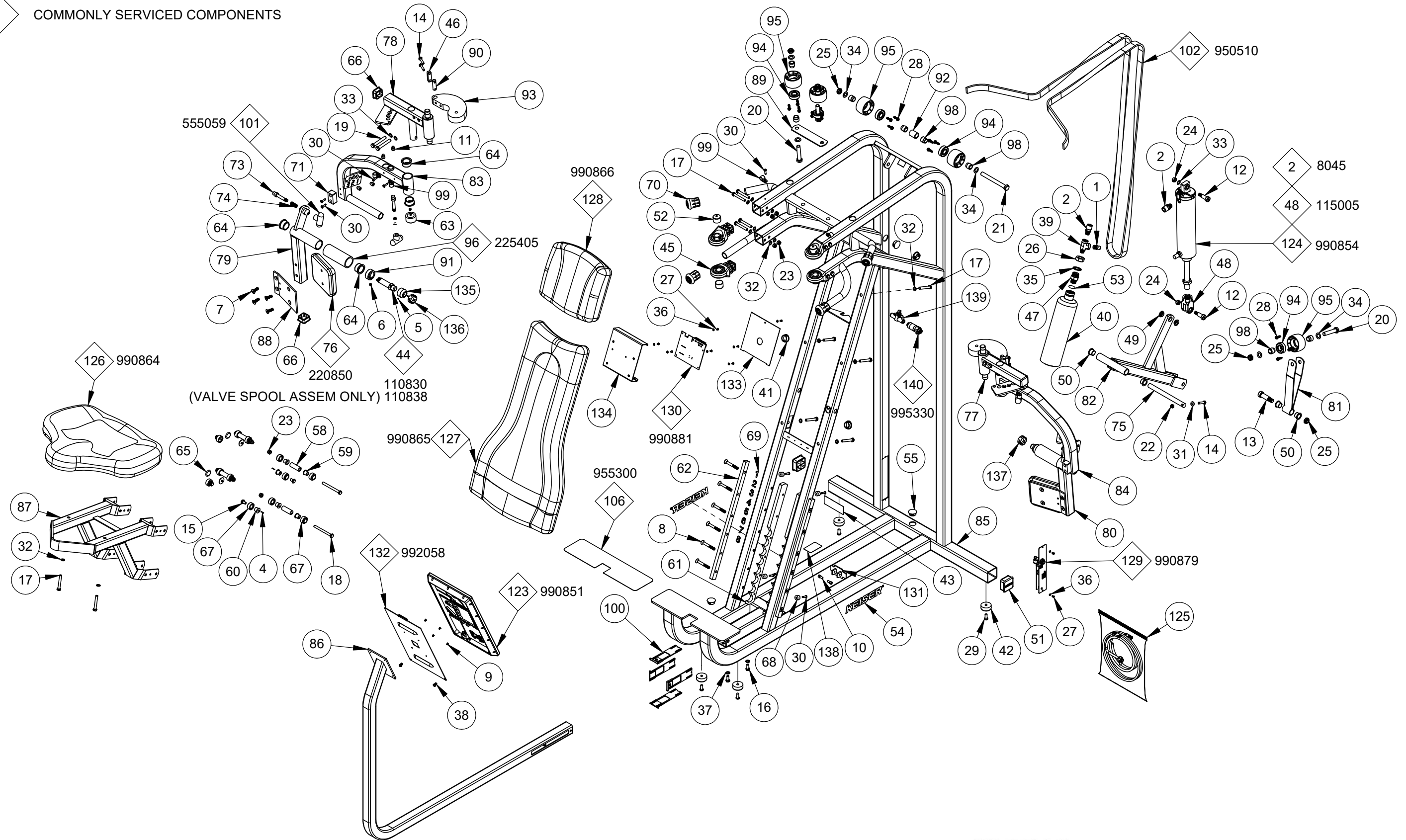


COMMONLY SERVICED COMPONENTS

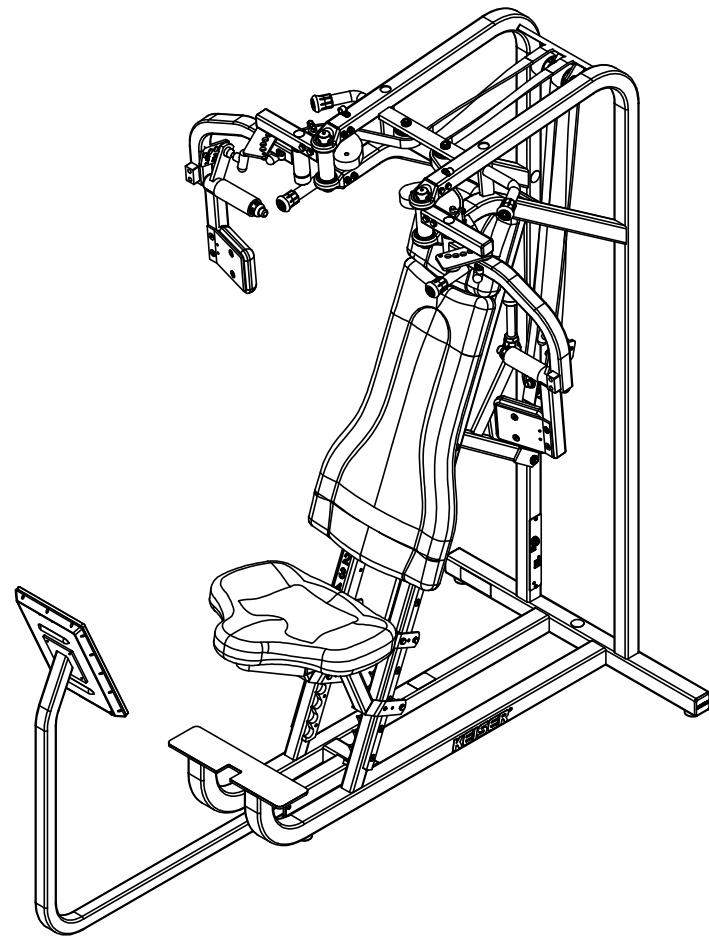


NOTE:

THIS DRAWING COVERS: 2235B4 & 2235X4

		KEISER 2470 South Cherry Ave. Phone: (559) 256-8000 Fresno, CA USA 93705-5004 Fax: (559) 256-8100 THE INFORMATION DISCLOSED HEREIN WAS ORIGINATED BY AND IS THE PROPERTY OF KEISER CORP. AND ALL PATENT, PROPRIETARY DESIGN, USE, SALE, MANUFACTURING, AND REPRODUCTION RIGHTS THERE TO ARE RESERVED BY KEISER CORP.		ECO BY: AL	ECO ENGINEER: LC	ECO CHECK BY: LC	ECO DATE: 5/4/26	ECO: 4178
				PROJECT ENGINEER: CHIEF ENGINEER		DRAWN BY: AL		ORIGINATION DATE: 1/7/26
				MATERIAL:				MATERIAL #:
REV: B	REFERENCE WM BOM REV E	DIMENSIONS ARE IN INCHES DIMENSIONS IN [] ARE MILLIMETERS BREAK SHARP EDGES .005-.015 [.10-.40] MACHINED SURFACE FINISH IS 63 MICRONS [1.6 MICROMETERS]		TITLE: A400 SEATED BUTTERFLY - SA			PART #: 2235X4-SA	REV: B

ITEM NO.	QTY.	PART NO.	TITLE	ITEM NO.	QTY.	PART NO.	TITLE	ITEM NO.	QTY.	PART NO.	TITLE
1	1	8044	CON - 8MM PTC X 1/4M NPT	64	8	135050	BEARING - FLANGE-1" ID	120	1	966712	WIRE - CABLE-2-22 GA
2	2	8045	CON - 12MM PTC X 1/4M NPT	65	4	135055	STEM BUMPER	121	1	966717	WIRE - CABLE-8-24 GA
3	1	8385	Y CONNECTOR - 8MM PTC	66	4	135056	CAP - 1.500 SQ-PL	122	1	966748	WIRE - CABLE-4 CIRCUIT-MICROFIT-2M
4	4	9009	PIN - SPRING 1/16 X 1/2	67	12	135060	ROLLER	123	1	990851	DISPLAY MODULE - A400
5	4	9014	SCREW - HSSS 8-32 X 1/8 SS	68	4	135076	PLASTIC BUMPER	124	1	990854	CYL - XDCR-2500 X 7000
6	4	9026	SCREW - HSSS 5/16-18 X 1/4 ZP	69	1	135306	DECAL - SEAT-1-10	125	1	990862	KIT - INSTALLATION-A400
7	8	9075	SCREW - SFCHCS 5/16-18 X 1 ZP	70	4	135422	RUBBER CRUTCH TIP #20 BLK	126	1	990864	CUSHION - SEAT-A400
8	12	9079	SCREW - SFCHCS 5/16-18 X2 1/2	71	2	165421	STOP - EA-URETHANE	127	1	990865	CUSHION - BACK-A400
9	4	9087	SCREW - CRFCHMS 6-32 X 1/4 SS	72	1	170891	ASSY - MUFFLER-LONG	128	1	990866	CUSHION - HEAD-A400
10	2	9098	SCREW - SHCS 1/4-20 X 1/2 ZP	73	4	172180	PLUNGER	129	1	990879	MODULE - POWER ENTRY-MDR
11	8	9104	SCREW - SHCS 5/16-18 X 1/4 ZP	74	4	175500	SPRING - PLUNGER	130	1	990881	CKT BRD - PROCESSOR-A400-W SOFTWARE
12	2	9127	SCREW - SHSS 1/2 X 1 ZP	75	1	212180	PIVOT SHAFT	131	1	990959	END CAP - DISPLAY TUBE
13	1	9131	SCREW - SHSS 5/8 X 1-1/2 ZP	76	2	220850	ARM CUSHION	132	1	992058	PLATE - DISPLAY BACK-A400
14	5	9154	SCREW - HHCS 1/4-20 X 1-1/4 ZP	77	1	220920	L ADJUST ARM	133	1	992059	PLATE - COVER-PROC BOX
15	4	9174	SCREW - HHCS 5/16-18 X 1/2 ZP	78	1	220921	R ADJUST ARM	134	1	992064	BOX - PROCESSOR-A400
16	2	9175	SCREW - HHCS 5/16-18 X 3/4 ZP	79	1	220922	R EX ARM - BOTTOM	135	2	995001	CAP - GRIP W HOLE
17	16	9179	SCREW - HHCS 5/16-18 X 2-1/4 ZP	80	1	220923	L EX ARM - BOTTOM	136	1	995300	DECAL - TB-PLUS
18	4	9183	SCREW - HHCS 5/16-18 X 3-1/2 ZP	81	1	220924	IDLER MOUNT	137	1	995301	DECAL - TB-MINUS
19	4	9207	SCREW - HHCS 3/8-16 X 2-1/2 ZP	82	1	220926	LEVER ARM	138	1	995324	DECAL - MADE IN THE USA
20	3	9214	SCREW - HHCS 1/2-13 X 2-1/2 ZP	83	1	220930	R EX ARM - TOP	139	1	995328	VALVE - FLOW CONTROL-IN-LINE-8MM PTC
21	1	9217	SCREW - HHCS 1/2-13 X 5 ZP	84	1	220931	L EX ARM - TOP	140	1	995330	FILTER - IN LINE-8MM PTC
22	1	9225	NUT - HELN 1/4-20 ZP	85	1	220934	FRAME - MAIN-A400	141	1	995418	BAG - 4 X 6 X 4MIL-ZIP LOCK
23	12	9226	NUT - HELN 5/16-18 ZP	86	1	220935	DISPLAY MT-A400				
24	2	9227	NUT - HRLN 3/8-16 ZP	87	1	220936	FRAME-SEAT-A400				
25	5	9230	NUT - HEJN 1/2-13 ZP	88	2	221000	UPHOLSTREY MT PLATE				
26	1	9231	NUT - HJN 3/4-10 ZP	89	1	221800	BELT GUIDE				
27	9	9255	SCREW - CRPHMS 6-32 X 1/4 ZP	90	2	222160	ROUND BELT CLAMP				
28	15	9270	SCREW - HWHTS #12-24 X 3/4 ZP	91	2	222350	GRIP COLLAR - 1000 ID				
29	4	9279	SCREW - SBHTS-TF 5/16-18 X 3/4 ZP	92	1	223080	SPACER				
30	14	9285	SCREW - CRPHTS 10-24 X 3/4 ZP	93	2	225001	CAM				
31	1	9349	WASHER - FW-SAE-1/4 ZP	94	5	225400	BEARING - 6203ZZ-SHIELDED				
32	24	9353	WASHER - THIN-ACFT 0313 SS	95	5	225401	IDLER				
33	5	9355	WASHER - FW-ACFT-3/8 SS	96	2	225405	GRIP - 1.43" ID x 4.5" L				
34	8	9360	WASHER - ACFT 1/2 SS	97	1	265310	Y CONNECTOR - 1/8 DIA-PL				
35	1	9364	WASHER - ITLW 3/4 ZP	98	10	265422	BUSHING - IDLER				
36	9	9366	WASHER - ITLW #6 ZP	99	6	275422	CLAMP - CABLE-0500				
37	2	9389	WASHER - ITLW 5/16 ZP	100	4	505068	BUSHING - 4 PIECE				
38	2	9506	SCREW - SBHCS M6X1 X 10 ZP	101	4	555059	KNOB - T-BLACK				
39	1	9988	STREET TEE 1/4	102	1	950510	BELT - 1 IN-NEOPRENE				
40	1	100903	TANK - 68 IN3	103	1	953098	TUBING - 8MM URETHANE-BLK				
41	1	105058	PLUG - DIA 1-CLEAR	104	1	953099	TUBING - 12MM URETHANE-BLK				
42	4	105423	BUMPER - MOLDED GLIDE	105	1	953108	TUBING - 1/4 URETHANE BLK				
43	1	105443	DECAL - SN-STRENGTH-CE	106	1	955300	STRIP - PROTECTOR-4 INCH				
44	2	110830	ASSY - TB VALVE-DIG	107	2	962004	CON - 2MM-2-S				
45	4	110894	BEARING - TUBE MT-0750 ID	108	6	962005	CON - MOD - P-4P-4C				
46	2	111896	CLAMP W/HOLE	109	2	962006	CON - MOD-P-6P-4C				
47	1	115000	BUSHING - TANK	110	1	962016	CON - MOD-COUPLER-6-6				
48	1	115005	CLEVIS - CYLINDER-2500	111	4	962017	CON-MOD-P-6P-6C				
49	2	115051	BEARING - FLANGE-0.500 ID	112	1	962055	CON - 2MM-8-S				
50	4	115052	BEARING - FLANGE-0.625 ID	113	1	962070	CON - 2.5MM-6-S				
51	2	115054	PLUG - 2 IN SQ-KEISER	114	1	962071	CON - S-20-24 AWG-CRIMP-TIN				
52	4	115067	CAP - Ø1 X 3/4	115	1	962072	CON - 3MM-2-S				
53	1	115333	O-RING - .943 X .737 X .103	116	1	962073	CON - S-20-24 AWG-CRIMP-MOLEX				
54	2	115372	DECAL - KEISER LOGO-1 1/4" RED	117	1	962074	CON - MOD-P-8P-8C				
55	5	115404	PLUG - HOLE-1 DIA	118	1	964506	FILTER - FERRITE-310 OHM				
56	16	115423	TIE - 8 IN-PL BLK	119	1	966701	WIRE - CABLE-4-26 GA				
57	1	115429	PLASTIC TIE - 10" RED								
58	4	132181	TUBE - ROLLER								
59	8	132200	AXLE								
60	4	132201	AXLE - THREADED								
61	2	135005	SEAT RACK								
62	2	135006	SEAT RAIL								
63	2	135049	CAP - Ø1 ID								



KEISER 2470 South Cherry Ave. Phone: (559) 256-8000 Fresno, CA USA 93705-5004 Fax: (559) 256-8100 THE INFORMATION DISCLOSED HEREIN WAS ORIGINATED BY AND IS THE PROPERTY OF KEISER CORP. AND ALL PATENT, PROPRIETARY DESIGN, USE, SALE, MANUFACTURING, AND REPRODUCTION RIGHTS THERE TO ARE RESERVED BY KEISER CORP.		ECO BY:	ECO ENGINEER:	ECO CHECK BY:	ECO DATE:	ECO:
		AL	LC	LC	5/4/26	4178
DIMENSIONS ARE IN INCHES DIMENSIONS IN [] ARE MILLIMETERS BREAK SHARP EDGES .005-.015 [.10-.40] MACHINED SURFACE FINISH IS 63 MICRONS [1.6 MICROMETERS]		PROJECT ENGINEER:		DRAWN BY:		ORIGINATION DATE:
		CHIEF ENGINEER		AL		1/7/26
REV: B REFERENCE WM BOM REV E		MATERIAL:				MATERIAL #:
		TITLE: A400 SEATED BUTTERFLY - SA				PART #: 2235X4-SA

SHEET: 2 OF 2 SIZE: B SCALE: 1:18 (DO NOT SCALE DRAWING) LAST SAVED: 5/4/2026