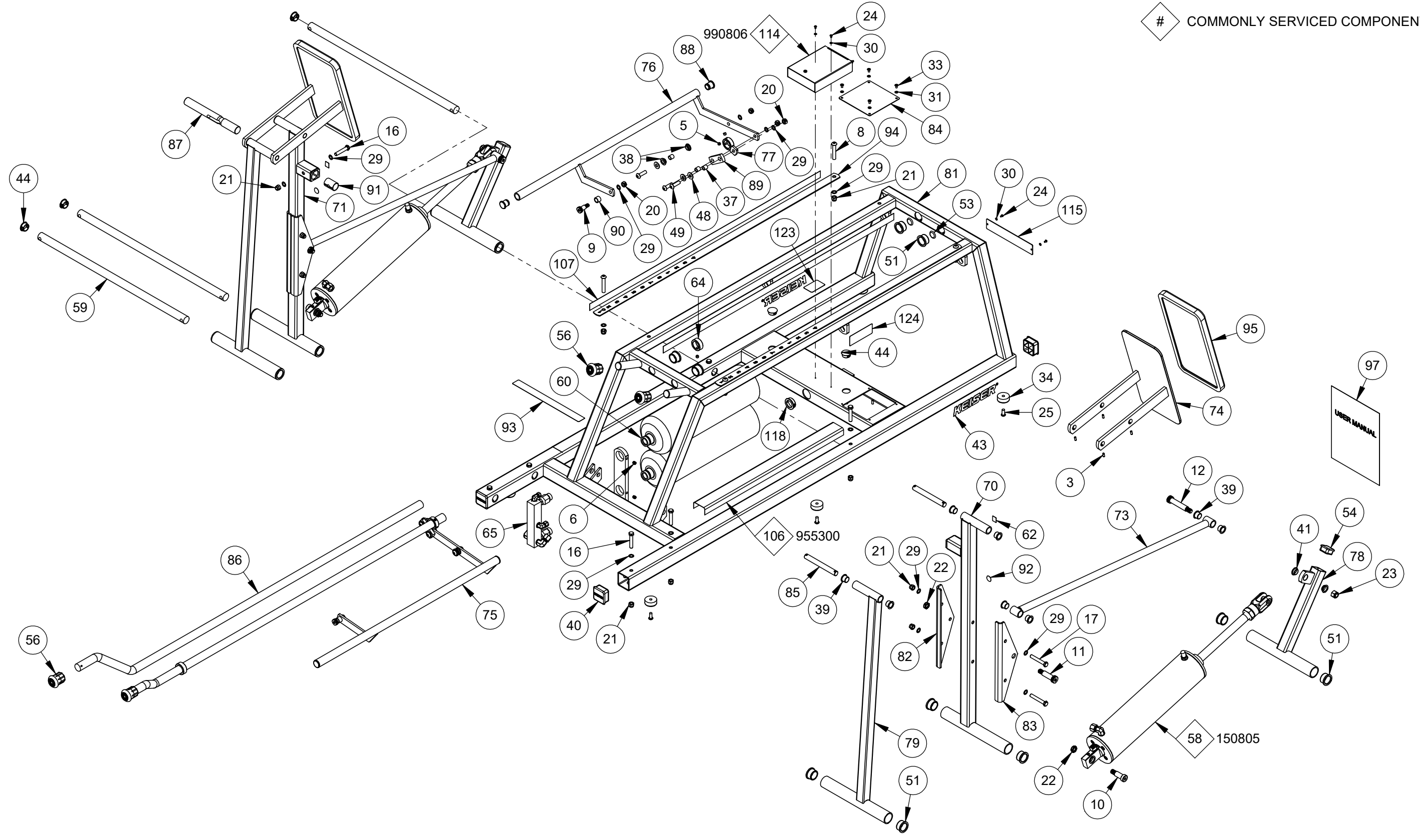


# COMMONLY SERVICED COMPONENTS

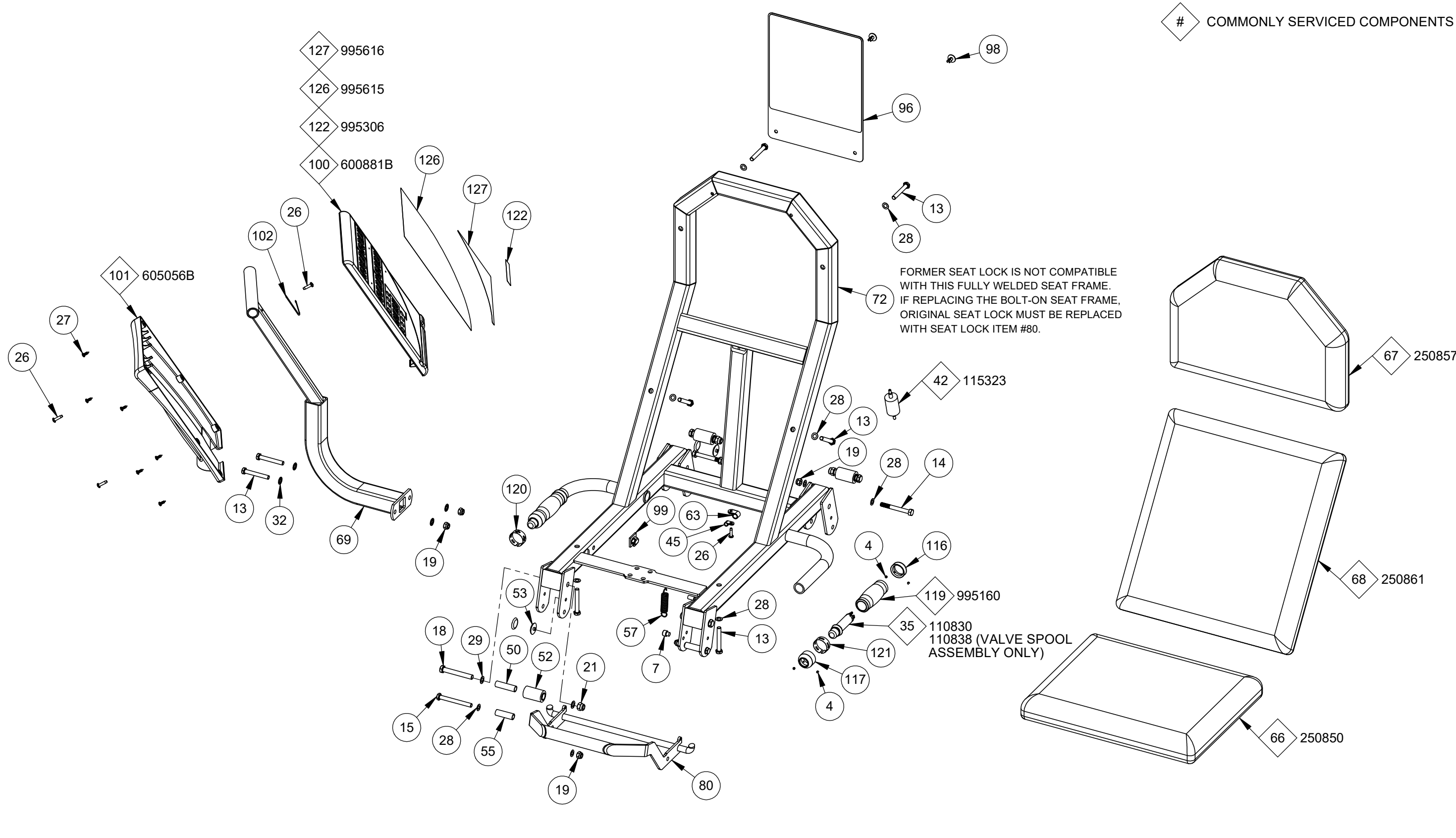


NOTE:

THIS DRAWING COVERS: 2531BP & 2531SP

		<b>KEISER</b> 2470 South Cherry Ave. Phone: (559) 256-8000 Fresno, CA USA 93705-5004 Fax: (559) 256-8100 THE INFORMATION DISCLOSED HEREIN WAS ORIGINATED BY AND IS THE PROPERTY OF KEISER CORP. AND ALL PATENT, PROPRIETARY DESIGN, USE, SALE, MANUFACTURING, AND REPRODUCTION RIGHTS THERE TO ARE RESERVED BY KEISER CORP.		ECO BY: JC	ECO ENGINEER: MP	ECO CHECK BY: LC	ECO DATE: 4/30/26	ECO: 4538	
				PROJECT ENGINEER: LC		DRAWN BY: BJU		ORIGINATION DATE: 11/20/20	
				MATERIAL:				MATERIAL #:	
				TITLE: A300 LEG PRESS - SA				PART #: 2531XP-SA	REV: D
REV: D	REFERENCE PRODUCTION DRAWING REV E			DIMENSIONS ARE IN INCHES DIMENSIONS IN [ ] ARE MILLIMETERS BREAK SHARP EDGES .005-.015 [ .10-.40 ] MACHINED SURFACE FINISH IS 63 MICRONS [ 1.6 MICROMETERS ]					

# COMMONLY SERVICED COMPONENTS

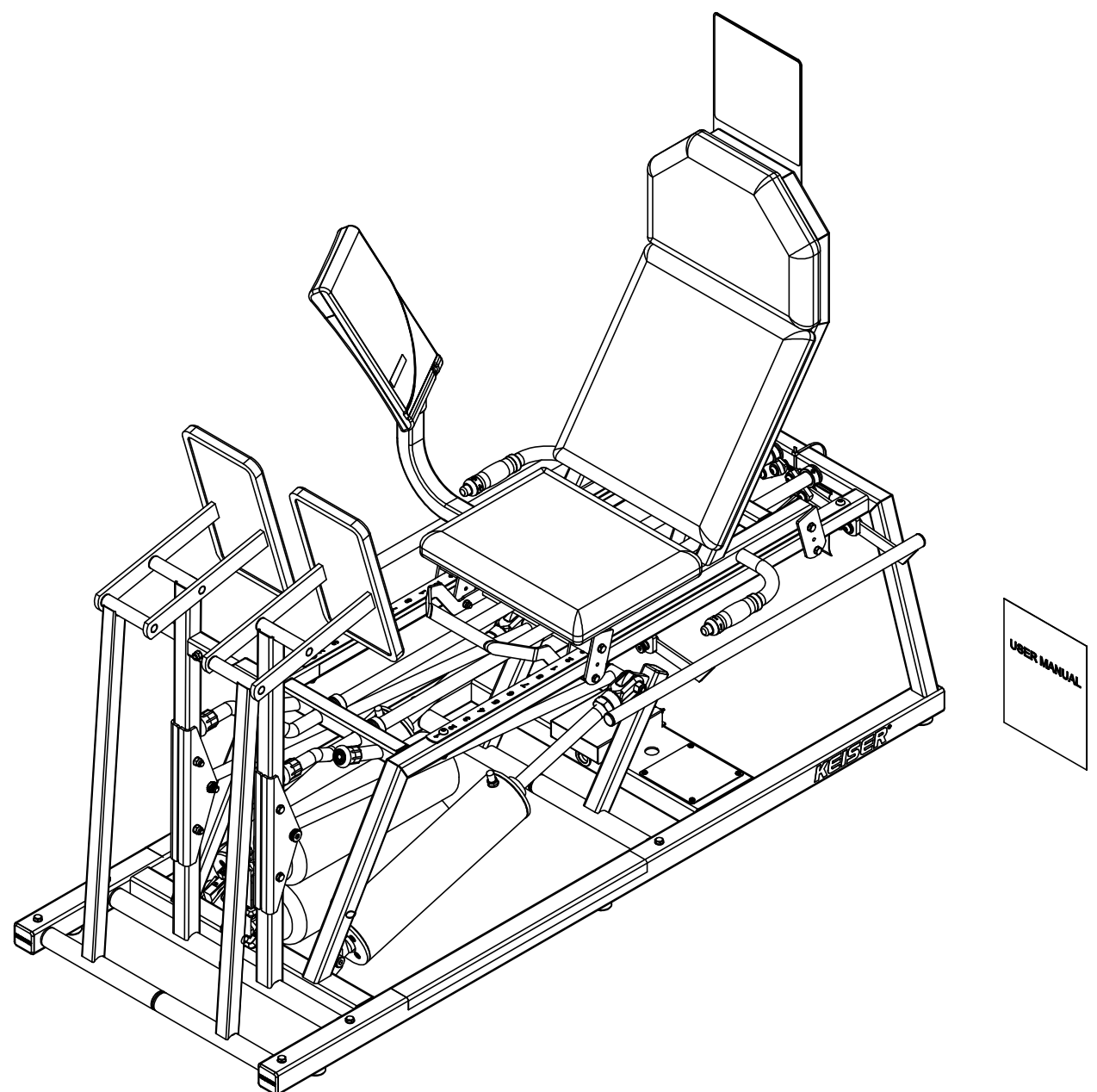


FORMER SEAT LOCK IS NOT COMPATIBLE WITH THIS FULLY WELDED SEAT FRAME. IF REPLACING THE BOLT-ON SEAT FRAME, ORIGINAL SEAT LOCK MUST BE REPLACED WITH SEAT LOCK ITEM #80.

		<b>KEISER</b> 2470 South Cherry Ave. Fresno, CA USA 93705-5004 Phone: (559) 256-8000 Fax: (559) 256-8100 THE INFORMATION DISCLOSED HEREIN WAS ORIGINATED BY AND IS THE PROPERTY OF KEISER CORP. AND ALL PATENT, PROPRIETARY DESIGN, USE, SALE, MANUFACTURING, AND REPRODUCTION RIGHTS THERE TO ARE RESERVED BY KEISER CORP.		ECO BY: JC	ECO ENGINEER: MP	ECO CHECK BY: LC	ECO DATE: 4/30/26	ECO: 4538
				PROJECT ENGINEER: LC	DRAWN BY: BJU		ORIGINATION DATE: 11/20/20	
				MATERIAL:			MATERIAL #:	
REV: D	REFERENCE PRODUCTION DRAWING REV E	DIMENSIONS ARE IN INCHES DIMENSIONS IN [ ] ARE MILLIMETERS BREAK SHARP EDGES .005-.015 [ .10-.40 ] MACHINED SURFACE FINISH IS 63 MICRONS [ 1.6 MICROMETERS ]		TITLE: A300 LEG PRESS - SA			PART #: 2531XP-SA	REV: D

SHEET: 2 OF 3 SIZE B SCALE 1:10 (DO NOT SCALE DRAWING) LAST SAVED: 4/30/2026

ITEM NO.	QTY.	PART NO.	TITLE	ITEM NO.	QTY.	PART NO.	TITLE	ITEM NO.	QTY.	PART NO.	TITLE
1	3	8053	TUBE - INSERT-1/4	64	2	222350	GRIP COLLAR - 1000 ID	119	2	995160	GRIP - MOLDED
2	1	8125	TEE - 3/8C X 1/4C X 1/4C	65	1	250808X	MANIFOLD ASSY	120	1	995300	DECAL - TB-PLUS
3	8	9001	PIN SPRING - 3/16 X 1/2	66	1	250850	SEAT CUSHION	121	1	995301	DECAL - TB-MINUS
4	8	9014	SCREW - HSSS 8-32 X 1/8 SS	67	1	250857	HEAD CUSHION	122	1	995306	DECAL - SEAT, LEG-POWER
5	6	9026	SCREW - HSSS 5/16-18 X 1/4 ZP	68	1	250861	BACK CUSHION	123	1	995324	DECAL - MADE IN THE USA
6	2	9027	SCREW - HSSS 0313-18 X 0375 ZP	69	1	250903	WELDT - DISPLAY MT	124	1	995385	DECAL - SN-STRENGTH-CE-UKCA-MDR
7	1	9104	SCREW - SHCS 5/16-18 X 1/4 ZP	70	1	250907	L EX ARM	125	1	995418	BAG - 4 X 6 X 4MIL-ZIP LOCK
8	4	9112	SCREW - SBHCS-0375 16 X 2250 ZP	71	1	250908	R EX ARM	126	1	995615	PLACARD - ENG-POWER-BLK
9	2	9126	SCREW - SHSS 1/2 X 3/4 ZP	72	1	250911	FRAME - SEAT	127	1	995616	PLACARD - ENG-KEY-RED
10	2	9128	SCREW - SHSS 5/8 X 1-1/4 ZP	73	2	250913	DRAG LINK				
11	2	9129	SCREW - SHSS 5/8 X 1 3/4 BLK	74	2	250914	PEDAL - FOOT				
12	2	9130	SCREW - SHSS 5/8 X 2 3/4 BLK	75	1	250919	L STOP HANDLE				
13	8	9179	SCREW - HHCS 5/16-18 X 2-1/4 ZP	76	1	250920	R STOP HANDLE				
14	2	9181	SCREW - HHCS 5/16-18 X 2 3/4 ZP	77	2	250921	COLLAR - CONNECTOR				
15	2	9184	SCREW - HHCS 5/16-18 X 3 ZP	78	2	250923	LEVER ARM				
16	7	9205	SCREW - HHCS 3/8-16 X 2 ZP	79	2	250929	EXERCISE ARM - A420				
17	4	9207	SCREW - HHCS 3/8-16 X 2-1/2 ZP	80	1	250938	SEAT LOCK - EXTENDED				
18	4	9208	SCREW - HHCS 3/8-16 X 2-3/4 ZP	81	1	250947	FRAME - MAIN-2531				
19	6	9226	NUT - HELN 5/16-18 ZP	82	2	252000	BRKT - DRAG LINK 1/2 H				
20	8	9227	NUT - HRLN 3/8-16 ZP	83	2	252001	BRKT - DRAG LINK 5/8 H				
21	19	9228	NUT - HELN 3/8-16 ZP	84	1	252051	PLATE - COVER-CROSS TUBE				
22	4	9230	NUT - HEJN 1/2-13 ZP	85	4	252180	SHAFT - FOOT PEDAL				
23	2	9241	NUT - HELN 1/2-13 ZP	86	2	252242	SHAFT - LONG-ARM STOP				
24	4	9255	SCREW - CRPHMS 6-32 X 1/4 ZP	87	1	252247	ROD - ARM LOCK				
25	6	9279	SCREW - SBHTS-TF 5/16-18 X 3/4 ZP	88	4	255051	CAP - Ø1-PL				
26	4	9285	SCREW - CRPHTS 10-24 X 3/4 ZP	89	2	255052	PLASTIC CONNECTOR				
27	6	9291	SCREW - CRPHTS 8 X 1/2 ZP	90	2	255053	SLEEVE BUSHING				
28	14	9353	WASHER - THIN-ACFT 0313 SS	91	1	255057	LOCKING SLEEVE				
29	36	9355	WASHER - FW-ACFT-3/8 SS	92	2	255300	RED DOT				
30	4	9366	WASHER - ITLW #6 ZP	93	1	255301	DECAL - ARM STOP				
31	4	9379	WASHER - ITLW 10	94	2	255407	LONG SS SEAT STRIP				
32	4	9389	WASHER - ITLW 5/16 ZP	95	2	255420	FOOT PAD				
33	4	9546	SCREW - CRPHMS 10-32 X 5/16 SS	96	1	255447	PLACARD - A300 LEG PRESS				
34	6	105423	BUMPER - MOLDED GLIDE	97	1	255501	MANUAL - USER-A300 LEG PRESS				
35	2	110830	ASSY - TB VALVE-DIG	98	2	265404	PLASTIC RIVET				
36	1	110897	ASSY - QD-MALE	99	1	545055	ANCHOR - CABLE PL				
37	6	113040	SHOULDER SLEEVE - 1/2 X 1/2	100	1	600881B	DISPLAY BOX - 5 WIN				
38	4	115051	BEARING - FLANGE-0.500 ID	101	1	605056B	DISPLAY BOX - BACK				
39	16	115052	BEARING - FLANGE-0.625 ID	102	1	605428	GROUND CLAMP - DISPLAY				
40	4	115054	PLUG - 2 IN SQ-KEISER	103	1	953101	TUBING - .375 OD X .062 W-PE BLK				
41	4	115056	BEARING - FLANGE-0.625 ID-SHORT	104	1	953102	TUBING - .500 OD X .062 W-PE BLK				
42	1	115323	FILTER - IN LINE	105	1	953108	TUBING - 1/4 URETHANE BLK				
43	2	115372	DECAL - KEISER LOGO-1 1/4" RED	106	1	955300	STRIP - PROTECTOR-4 INCH				
44	5	115404	PLUG - HOLE-1 DIA	107	1	955306	TAPE - 6.7 MIL UHMW-1" TRANSPARENT				
45	1	115422	CLAMP - CABLE-Ø1/4 TUBE	108	2	962004	CON - 2MM-2-S				
46	30	115423	TIE - 8 IN-PL BLK	109	6	962005	CON - MOD - P-4P-4C				
47	1	115429	PLASTIC TIE - 10" RED	110	1	962016	CON - MOD-COUPLER-6-6				
48	6	115450	WASHER - FW .88 X .39 X .07 NP	111	4	962017	CON-MOD-P-6P-6C				
49	6	115451	SCREW - SBHCS 3/8-16 X 1-1/4 NP	112	1	966701	WIRE - CABLE-4-26 GA				
50	4	133040	TUBE - ROLLER	113	1	966702	WIRE - CABLE-6-26GA				
51	16	135050	BEARING - FLANGE-1" ID	114	1	990806	ASSY - PROCESSOR BOX				
52	4	135053	SEAT ROLLER - LONG	115	1	992075	PLATE - COVER-POWER ENTRY-WO HOLE				
53	6	135055	STEM BUMPER	116	2	995000	COLLAR - GRIP				
54	2	135056	CAP - 1.500 SQ-PL	117	2	995001	CAP - GRIP W HOLE				
55	2	135403	SEAT SLEEVE	118	1	995083	BUSHING - SNAP-1-3/8				
56	4	135422	RUBBER CRUTCH TIP #20 BLK								
57	1	135424	SPRING - PEDAL								
58	2	150805	ASSY - EC-4000 X 12000								
59	3	152244	SHAFT - PIVOT								
60	2	155369	TANK - 300 CU IN-PAINTED								
61	1	170891	ASSY - MUFFLER-LONG								
62	1	205331	DECAL - 1-2								
63	1	215421	CLAMP - CABLE-0375								



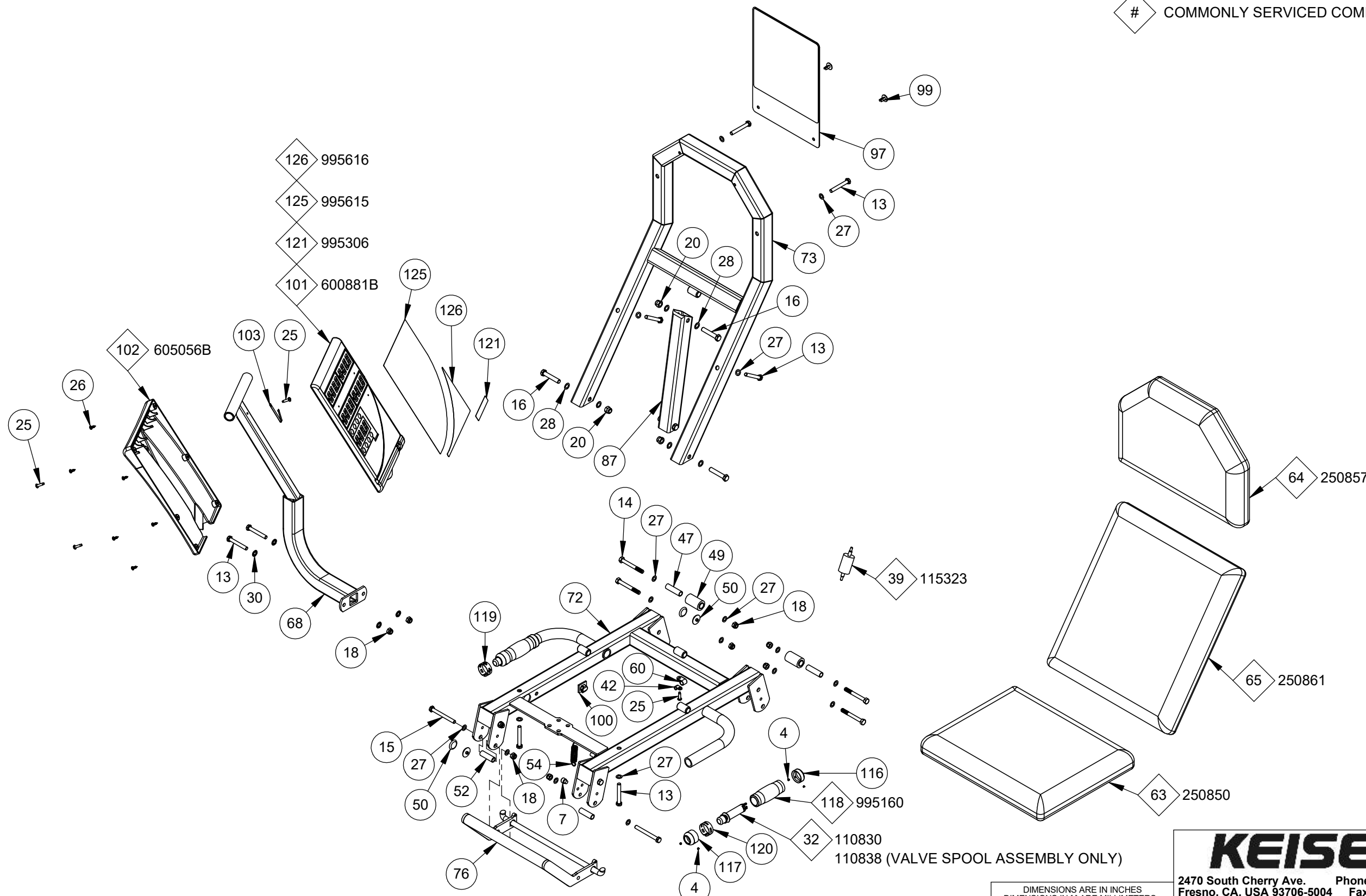
		ECO BY:	JC	ECO ENGINEER:	MP	ECO CHECK BY:	LC	ECO DATE:	4/30/26	ECO:	4538
<small>2470 South Cherry Ave. Phone: (559) 256-8000 Fresno, CA USA 93705-5004 Fax: (559) 256-8100 THE INFORMATION DISCLOSED HEREIN WAS ORIGINATED BY AND IS THE PROPERTY OF KEISER CORP. AND ALL PATENT, PROPRIETARY DESIGN, USE, SALE, MANUFACTURING, AND REPRODUCTION RIGHTS THERE TO ARE RESERVED BY KEISER CORP.</small>		PROJECT ENGINEER:	LC	DRAWN BY:	BJU	ORIGINATION DATE:	11/20/20				
<small>DIMENSIONS ARE IN INCHES DIMENSIONS IN [ ] ARE MILLIMETERS BREAK SHARP EDGES .005-.015 [ .10-.40 ] MACHINED SURFACE FINISH IS 63 MICRONS [ 1.6 MICROMETERS ]</small>		MATERIAL:		MATERIAL #:		TITLE:		PART #:		REV:	
REV: D REFERENCE PRODUCTION DRAWING REV E		A300 LEG PRESS - SA		2531XP-SA						D	

SHEET: 3 OF 3 SIZE: B SCALE: 1:10 (DO NOT SCALE DRAWING) LAST SAVED: 4/30/2026



2531XP-SA

# COMMONLY SERVICED COMPONENTS



PRINTED ON: 9/11/2025

DIMENSIONS ARE IN INCHES  
DIMENSIONS IN [ ] ARE MILLIMETERS  
BREAK SHARP EDGES .005-.015 [ .10-.40 ]  
MACHINED SURFACE FINISH IS  
63 MICROINCHES [ 1.6 MICROMETERS ]  
DO NOT SCALE DRAWING

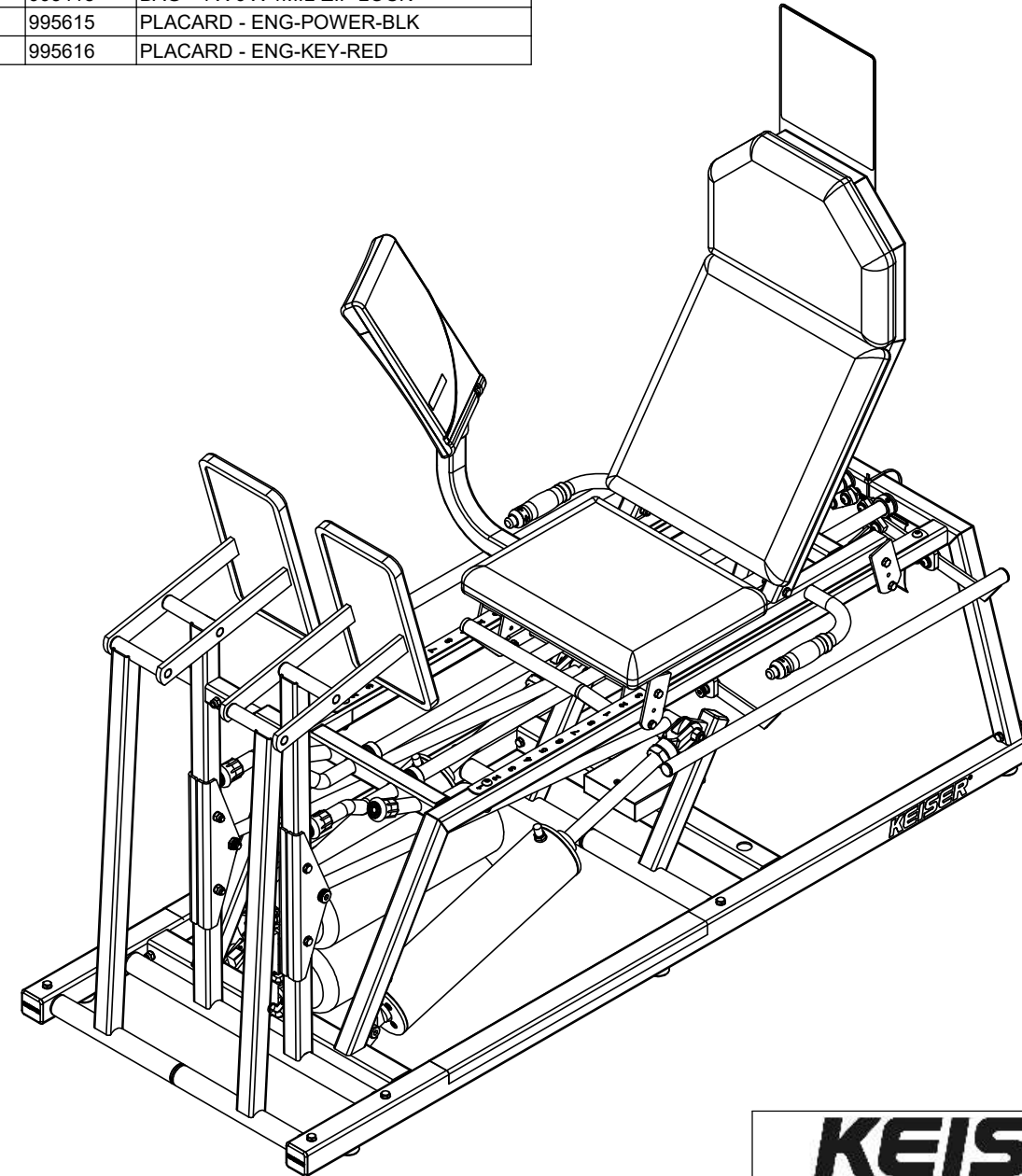
**KEISER**<sup>®</sup>  
2470 South Cherry Ave. Phone: (559) 256-8000  
Fresno, CA, USA 93706-5004 Fax: (559) 256-8100  
THE INFORMATION DISCLOSED HEREIN WAS ORIGINATED BY  
AND IS THE PROPERTY OF KEISER CORP. AND ALL PATENT,  
PROPRIETARY, DESIGN, USE, SALE, MANUFACTURING, AND  
REPRODUCTION RIGHTS THERETO ARE RESERVED BY KEISER  
CORP.

C	4445	REFERENCE PRODUCTION DRAWING REV D	JC	LC	9/11/25	
REV	ECO	REVISION DESCRIPTION	BY	CKD	DATE	

DRAWN BY: BJU	DATE DRAWN: 10/26/20	CHECKED BY: LC	DATE CHECKED: 11/20/20
MATERIAL:			
RAW MAT:			MASS (Kg):
TITLE: A300 LEG PRESS - SA			
SHEET 2 OF 3	SCALE: 1:10	DRAWING SIZE: B	PART#: 2531XP-SA

**2531XP-SA**

ITEM NO.	QTY.	PART NO.	TITLE	ITEM NO.	QTY.	PART NO.	TITLE	ITEM NO.	QTY.	PART NO.	TITLE
1	3	8053	TUBE - INSERT-1/4	62	1	250808X	MANIFOLD ASSY	115	1	990806	ASSY - PROCESSOR BOX
2	1	8125	TEE - 3/8C X 1/4C X 1/4C	63	1	250850	SEAT CUSHION	116	2	995000	COLLAR - GRIP
3	8	9001	PIN SPRING - 3/16 X 1/2	64	1	250857	HEAD CUSHION	117	2	995001	CAP - GRIP W HOLE
4	8	9014	SCREW - HSSS 8-32 X 1/8 SS	65	1	250861	BACK CUSHION	118	2	995160	GRIP - MOLDED
5	6	9026	SCREW - HSSS 5/16-18 X 1/4 ZP	66	1	250900	L BOT FRM	119	1	995300	DECAL - TB-PLUS
6	2	9027	SCREW - HSSS 0313-18 X 0375 ZP	67	1	250901	R BOT FRM	120	1	995301	DECAL - TB-MINUS
7	1	9104	SCREW - SHCS 5/16-18 X 1/4 ZP	68	1	250903	WELDT - DISPLAY MT	121	1	995306	DECAL - SEAT, LEG-POWER
8	4	9112	SCREW - SBHCS-0375 16 X 2250 ZP	69	1	250907	L EX ARM	122	1	995324	DECAL - MADE IN THE USA
9	2	9126	SCREW - SHSS 1/2 X 3/4 ZP	70	1	250908	R EX ARM	123	1	995385	DECAL - SN-STRENGTH-CE-UKCA-MDR
10	2	9128	SCREW - SHSS 5/8 X 1-1/4 ZP	71	2	250909	EX ARM	124	1	995418	BAG - 4 X 6 X 4MIL-ZIP LOCK
11	2	9129	SCREW - SHSS 5/8 X 1 3/4 BLK	72	1	250911	SEAT BOT	125	1	995615	PLACARD - ENG-POWER-BLK
12	2	9130	SCREW - SHSS 5/8 X 2 3/4 BLK	73	1	250912	SEAT BACK	126	1	995616	PLACARD - ENG-KEY-RED
13	8	9179	SCREW - HHCS 5/16-18 X 2-1/4 ZP	74	2	250913	DRAG LINK				
14	6	9181	SCREW - HHCS 5/16-18 X 2 3/4 ZP	75	2	250914	PEDAL - FOOT				
15	2	9184	SCREW - HHCS 0313-18 X 3000 ZP	76	1	250916	SEAT LOCK				
16	13	9205	SCREW - HHCS 3/8-16 X 2 ZP	77	1	250919	L STOP HANDLE				
17	8	9207	SCREW - HHCS 3/8-16 X 2-1/2 ZP	78	1	250920	R STOP HANDLE				
18	10	9226	NUT - HELN 5/16-18 ZP	79	2	250921	COLLAR - CONNECTOR				
19	8	9227	NUT - HRLN 3/8-16 ZP	80	2	250923	LEVER ARM				
20	25	9228	NUT - HELN 3/8-16 ZP	81	1	250947	FRAME - MAIN-TOP				
21	4	9230	NUT - HEJN 1/2-13 ZP	82	2	252000	BRKT - DRAG LINK 1/2 H				
22	2	9241	NUT - HELN 1/2-13 ZP	83	2	252001	BRKT - DRAG LINK 5/8 H				
23	3	9255	SCREW - CRPHMS 6-32 X 1/4 ZP	84	4	252180	SHAFT - FOOT PEDAL				
24	6	9279	SCREW - SBHTS-TF 5/16-18 X 3/4 ZP	85	2	252242	SHAFT - LONG-ARM STOP				
25	4	9285	SCREW - CRPHTS 10-24 X 3/4 ZP	86	1	252247	ROD - ARM LOCK				
26	6	9291	SCREW - CRPHTS 8 X 1/2 ZP	87	1	254171	BOT CTR TUBE - SEAT BACK				
27	22	9353	WASHER - THIN-ACFT 0313 SS	88	1	254203	TUBE - CROSS-BOTTOM				
28	48	9355	WASHER - FW-ACFT-3/8 SS	89	4	255051	CAP - Ø 1-PL				
29	2	9366	WASHER - ITLW #6 ZP	90	2	255052	PLASTIC CONNECTOR				
30	4	9389	WASHER - ITLW 5/16 ZP	91	2	255053	SLEEVE BUSHING				
31	6	105423	BUMPER - MOLDED GLIDE	92	1	255057	LOCKING SLEEVE				
32	2	110830	ASSY - TB VALVE-DIG	93	2	255300	RED DOT				
33	1	110897	ASSY - QD-MALE	94	1	255301	DECAL - ARM STOP				
34	6	113040	SHOULDER SLEEVE - 1/2 X 1/2	95	2	255407	TO SEAT STOP SS				
35	4	115051	BEARING - FLANGE-0.500 ID	96	2	255420	FOOT PAD				
36	16	115052	BEARING - FLANGE-0.625 ID	97	1	255447	PLACARD - A300 LEG PRESS				
37	4	115054	PLUG - 2 IN SQ-KEISER	98	1	255501	MANUAL - USER-A300 LEG PRESS				
38	4	115056	BEARING - FLANGE-0.625 ID-SHORT	99	2	265404	PLASTIC RIVET				
39	1	115323	FILTER - IN LINE	100	1	545055	ANCHOR - CABLE PL				
40	2	115372	DECAL - KEISER LOGO-1 1/4" RED	101	1	600881B	DISPLAY BOX - 5 WIN				
41	2	115404	PLUG - HOLE-1 DIA	102	1	605056B	DISPLAY BOX - BACK				
42	2	115422	CLAMP - CABLE-Ø1/4 TUBE	103	1	605428	GROUND CLAMP - DISPLAY				
43	34	115423	TIE - 8 IN-PL BLK	104	1	953101	TUBING - .375 OD X .062 W-PE BLK				
44	1	115429	PLASTIC TIE - 10" RED	105	1	953102	TUBING - .500 OD X .062 W-PE BLK				
45	6	115450	WASHER - FW .88 X .39 X .07 NP	106	1	953108	TUBING - 1/4 URETHANE BLK				
46	6	115451	SCREW - SBHCS 3/8-16 X 1-1/4 NP	107	1	955300	STRIP - PROTECTOR-4 INCH				
47	4	133040	TUBE - ROLLER	108	1	955306	TAPE - 6.7 MIL UHMW-1" TRANSPARENT				
48	16	135050	BEARING - FLANGE-1" ID	109	2	962004	CON - 2MM-2-S				
49	4	135053	SEAT ROLLER - LONG	110	6	962005	CON - MOD - P-4P-4C				
50	6	135055	STEM BUMPER	111	1	962016	CON - MOD-COUPLER-6-6				
51	2	135056	CAP - 1.500 SQ-PL	112	4	962017	CON-MOD-P-6P-6C				
52	2	135403	SEAT SLEEVE	113	1	966701	WIRE - CABLE-4-26 GA				
53	4	135422	RUBBER CRUTCH TIP #20 BLK	114	1	966702	WIRE - CABLE-6-26GA				
54	1	135424	SPRING - PEDAL								
55	2	150805	ASSY - EC-4000 X 12000								
56	3	152244	SHAFT - PIVOT								
57	2	155369	TANK - 300 CU IN-PAINTED								
58	1	170891	ASSY - MUFFLER-LONG								
59	1	205331	DECAL - 1-2								
60	1	215421	CLAMP - CABLE-0375								
61	2	222350	GRIP COLLAR - 1000 ID								



USER MANUAL

**KEISER**<sup>®</sup>

2470 South Cherry Ave. Phone: (559) 256-8000  
 Fresno, CA, USA 93706-5004 Fax: (559) 256-8100

THE INFORMATION DISCLOSED HEREIN WAS ORIGINATED BY AND IS THE PROPERTY OF KEISER CORP. AND ALL PATENT, PROPRIETARY, DESIGN, USE, SALE, MANUFACTURING, AND REPRODUCTION RIGHTS THERETO ARE RESERVED BY KEISER CORP.

DIMENSIONS ARE IN INCHES  
 DIMENSIONS IN [ ] ARE MILLIMETERS  
 BREAK SHARP EDGES .005-.015 [ .10-.40 ]  
 MACHINED SURFACE FINISH IS  
 63 MICROINCHES [ 1.6 MICROMETERS ]  
 DO NOT SCALE DRAWING

DRAWN BY: BJU DATE DRAWN: 10/26/20 CHECKED BY: LC DATE CHECKED: 11/20/20

MATERIAL: RAW MAT: MASS (Kg):

TITLE: A300 LEG PRESS - SA

SHEET 3 OF 3 SCALE: 1:10 DRAWING SIZE: B PART#: 2531XP-SA

REV	ECO	REVISION DESCRIPTION	BY	CKD	DATE
C	4445	REFERENCE PRODUCTION DRAWING REV D	JC	LC	9/11/25

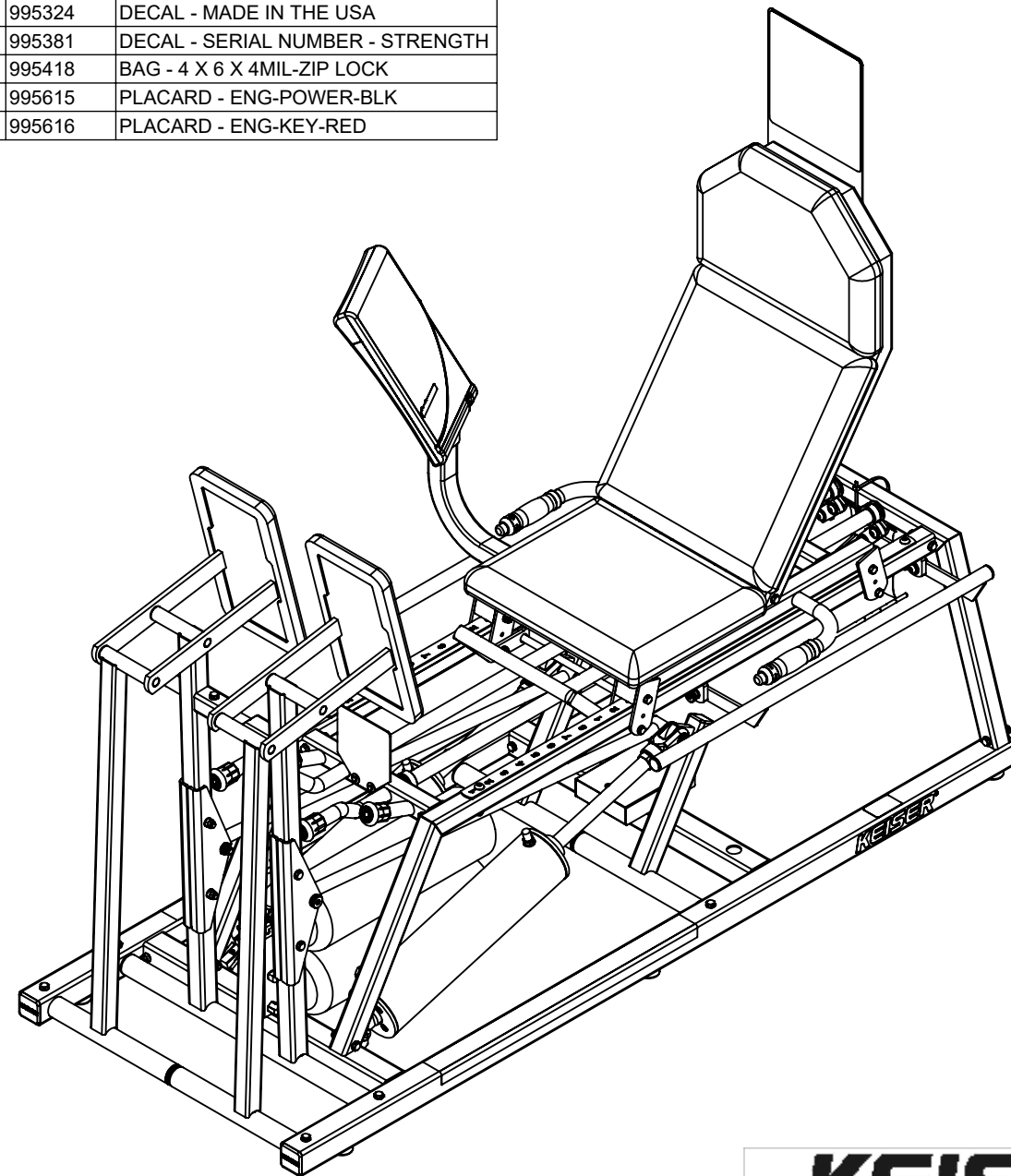
PRINTED ON: 9/11/2025



ITEM NO.	QTY.	PART NO.	TITLE	ITEM NO.	QTY.	PART NO.	TITLE
1	3	8053	TUBE - INSERT-1/8	64	1	250857	HEAD CUSHION
2	1	8125	TEE - 0375C X 0250C X 0250C	65	1	250861	BACK CUSHION
3	2	8155	ELBOW - 1/2C X 3/8M	66	1	250900	L BOT FRM
4	8	9001	PIN SPRING - 3/16 X 1/2	67	1	250901	R BOT FRM
5	8	9014	SCREW - HSSS 8-32 X 1/8 SS	68	1	250902	WELDT - CYLINDER MT
6	6	9026	SCREW - HSSS 5/16-18 X 1/4 ZP	69	1	250903	WELDT - DISPLAY MT
7	2	9027	SCREW - HSSS 0313-18 X 0375 ZP	70	1	250904	BACK FRAME
8	1	9104	SCREW - SHCS 5/16-18 X 1/4 ZP	71	1	250905	WELDT - CENTER FRAME-LH
9	4	9112	SCREW - SBHCS-0375 16 X 2250 ZP	72	1	250906	WELDT - CENTER FRAME-RH
10	2	9126	SCREW - SHSS 1/2 X 3/4 ZP	73	1	250907	WELDT - EA-LH
11	2	9128	SCREW - SHSS 5/8 X 1-1/4 ZP	74	1	250908	ASSY - EA-RH
12	2	9129	SCREW - SHSS 5/8 X 1 3/4 BLK	75	2	250909	WELDT - EXT ARM
13	2	9130	SCREW - SHSS 5/8 X 2 3/4 BLK	76	1	250910	ARM STOP-A300 BLK
14	8	9179	SCREW - HHCS 5/16-18 X 2-1/4 ZP	77	1	250911	WELDT - SEAT BOT
15	6	9181	SCREW - HHCS 5/16-18 X 2 3/4 ZP	78	1	250912	SEAT BACK
16	2	9184	SCREW - HHCS 0313-18 X 3000 ZP	79	2	250913	DRAG LINK
17	19	9205	SCREW - HHCS 3/8-16 X 2 ZP	80	2	250914	PEDAL - FOOT
18	8	9207	SCREW - HHCS 3/8-16 X 2-1/2 ZP	81	1	250916	SEAT LOCK
19	10	9226	NUT - HELN 5/16-18 ZP	82	1	250919	STOP HANDLE - L
20	8	9227	NUT - HRLN 3/8-16 ZP	83	1	250920	STOP HANDLE - R
21	31	9228	NUT - HELN 3/8-16 ZP	84	2	250921	COLLAR - CONNECTOR
22	6	9230	NUT - HELN 1/2-13 ZP	85	2	250923	WELDT - LEVER ARM
23	4	9272	SCREW - CRPHTS-TF #6-32 X 1/2 SS	86	2	252000	BRKT - DRAGLINK-0500 H X 0750 H
24	6	9279	SCREW - SBHTS-TF 5/16-18 X 3/4 ZP	87	2	252001	BRKT - DRAGLINK-LH
25	3	9285	SCREW - CRPHTS 10-24 X 3/4 ZP	88	4	252180	SHAFT - FOOT PEDAL
26	6	9291	SCREW - CRPHTS 8 X 1/2 ZP	89	2	252242	SHAFT - LONG-ARM STOP
27	22	9353	WASHER - ACFT-5/16 ZP	90	1	252247	ROD - ARM LOCK
28	60	9355	WASHER - FW-ACFT-3/8 SS	91	1	254171	TUBE - BOTTOM CENTER-SEAT BACK
29	2	9366	WASHER - ITLW #6 ZP	92	1	254203	TUBE - CROSS-BOTTOM
30	4	9389	WASHER - ITLW 5/16 ZP	93	4	255051	CAP - Ø1-PL
31	6	105423	BUMPER - MOLDED GLIDE	94	2	255052	PLASTIC CONNECTOR
32	2	110830	ASSY - TB VALVE-DIG	95	2	255053	SLEEVE BUSHING
33	1	110897	ASSY - QD-MALE	96	1	255057	LOCKING SLEEVE
34	6	113040	SHOULDER SLEEVE - 1/2 X 1/2	97	2	255300	RED DOT
35	4	115051	BEARING - FLANGE-.5 ID	98	2	255407	TO SEAT STOP SS
36	16	115052	BEARING - FLANGE-.625 ID	99	2	255420	FOOT PAD
37	4	115054	PLUG - 2 IN SQ-KEISER	100	1	255447	PLACARD - A300 LEG PRESS-PRNTD
38	4	115056	BEARING - FLANGE-.625 ID SHORT	101	1	255501	MANUAL - USER - A300 LEG PRESS
39	1	115323	FILTER - IN LINE	102	1	255603	PLACARD ENG 300 LOCK BAR
40	2	115372	DECAL - KEISER LOGO-1 1/4" RED	103	4	265404	PLASTIC RIVET
41	2	115404	PLUG - HOLE-1 DIA	104	1	545055	ANCHOR - CABLE PL
42	1	115422	CLAMP - CABLE-Ø 1/4 TUBE	105	1	600881	DISPLAY BOX 5 - WIN
43	19	115423	TIE - 8 IN-PL BLK	106	1	605056	DISPLAY BOX - BACK
44	1	115429	PLASTIC TIE - 10" RED	107	1	605428	GROUND CLAMP - DISPLAY
45	6	115450	WASHER - FW .88 X .39 X .07 NP	108	1	953101	TUBING - .375 OD X .062 W-PE BLK
46	6	115451	SCREW - SBHCS 3/8-16 X 1-1/4 NP	109	1	953102	TUBING - .500 OD X .062 W-PE BLK
47	4	133040	TUBE - ROLLER	110	1	953108	TUBING - 1/4 URETHANE BLK
48	16	135050	BEARING - FLANGE-1" ID	111	2	955300	STRIP - PROTECTOR-4 INCH
49	4	135053	SEAT ROLLER - LONG	112	2	955306	TAPE - 6.7 MIL UHMW-1"
50	6	135055	STEM BUMPER	113	2	962004	CON - 2MM-2-S
51	2	135056	CAP - 1.500 SQ-PL	114	6	962005	CON - MOD - P-4P-4C
52	2	135403	SEAT SLEEVE	115	1	962016	CON - MOD-COUPLER-6-6
53	4	135422	RUBBER CRUTCH TIP - #20 BLK	116	4	962017	CON-MOD-P-6P-6C
54	1	135424	SPRING - PEDAL	117	1	966701	WIRE - CABLE-4-26 GA
55	2	150805	ASSY - EC-4 X12	118	1	966702	WIRE - CABLE-6-26GA
56	3	152244	SHAFT - PIVOT				
57	2	155369	TANK - 300 CU IN-PAINTED				
58	1	170891	ASSY - MUFFLER-LONG				
59	1	205331	DECAL - 1-2				
60	2	215421	CLAMP - CABLE-0375				
61	2	222350	GRIP COLLAR - 1500 OD				
62	1	250808X	MANIFOLD ASSY				
63	1	250850	SEAT CUSHION				

## 2531XP-SA

ITEM NO.	QTY.	PART NO.	TITLE
119	1	990806	ASSY - PROCESSOR BOX
120	3	990812	KEY - DATA-CS
121	2	995000	COLLAR - GRIP
122	2	995001	CAP - GRIP W HOLE
123	2	995160	GRIP - MOLDED
124	1	995300	DECAL - TB-PLUS
125	1	995301	DECAL - TB-MINUS
126	1	995306	DECAL - SEAT, LEG-POWER
127	1	995324	DECAL - MADE IN THE USA
128	1	995381	DECAL - SERIAL NUMBER - STRENGTH
129	1	995418	BAG - 4 X 6 X 4MIL-ZIP LOCK
130	1	995615	PLACARD - ENG-POWER-BLK
131	1	995616	PLACARD - ENG-KEY-RED



A300 LEG PRESS  
USER MANUAL

# KEISER®

**2470 South Cherry Ave. Phone: (559) 256-8000**  
**Fresno, CA, USA 93706-5004 Fax: (559) 256-8100**

THE INFORMATION DISCLOSED HEREIN WAS ORIGINATED BY AND IS THE PROPERTY OF KEISER CORP. AND ALL PATENT, PROPRIETARY, DESIGN, USE, SALE, MANUFACTURING, AND REPRODUCTION RIGHTS THERETO ARE RESERVED BY KEISER CORP.

DIMENSIONS ARE IN INCHES  
DIMENSIONS IN [ ] ARE MILLIMETERS  
BREAK SHARP EDGES .005-.015 [.10-.40]  
MACHINED SURFACE FINISH IS  
63 MICROINCHES [1.6 MICROMETERS]  
DO NOT SCALE DRAWING

DRAWN BY: <b>BJU</b>	DATE DRAWN: <b>10/26/20</b>	CHECKED BY: <b>LC</b>	DATE CHECKED: <b>11/20/20</b>
----------------------	-----------------------------	-----------------------	-------------------------------

MATERIAL: \_\_\_\_\_  
RAW MAT: \_\_\_\_\_

TITLE: **A-300 LEG PRESS - PWR-SA**

SHEET **2** OF **2** SCALE: **1:12** DRAWING SIZE: **B** PART#: **2531XP-SA**

REV	DESCRIPTION	BY	DATE
A	3813 RFP	BJU	LC 11/20/20
ECO	REVISION DESCRIPTION	BY	CKD DATE

PRINTED ON: 12/2/2020 SW2006 V5.1

X:\drawings\\_APPROVED\25\_LEG\_PRESS\